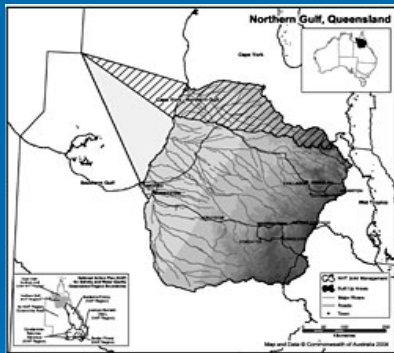




# Mitchell River Watershed Management Group Inc.

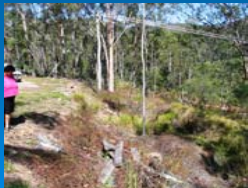


## Current projects happening around the catchment

- Bar Barrum people – GreenCorps project supporting Land and Water Centre
- Devolved grants for landholders in the Mareeba Dimbulah Water Supply Scheme Area – joint project with NGRMG, FNQ NRM and MRWMMG
- Education and awareness – tilapia information display at Mareeba Shire library (with DPI&F), school visits about tilapia Cross Regional Pest Fish Project (working with ACTFR),
- Mitchell River Water Resource Plan – draft Plan released in November submissions have closed and we are awaiting feedback on final document
- TRACK -Land & Water Australia Tropical Rivers and Coastal Knowledge Program
- Riparian Condition - working with ACTFR Australian Centre for Tropical Freshwater Research on the upper Walsh River area

# Irvinebank School Project

- Initially funded by Gambling Community Benefit Fund now with the support of Natural Resources & Water, Irvinebank Landcare Group, Irvinebank School and Mareeba Shire Council the project area will be extended on to further USL.



# Projects

## Bar Barrum Outstation- Petford

- Community Water Grant- \$27,000 received for 4 water tanks. First two tanks arrived in January 2007 and are now collecting precious rainwater



# Bar Barrum Outstation

After plumbing in the water tanks, the next step is consolidating a partnership with the Bar Barrum People and GreenCorp Australia to paint the Land and Water Centre at Bar Barrum Outstation.



## ➤ Gibb Creek Rehabilitation

Funded by the Bundaberg Rum Bush Fund and supported by Irvinebank Landcare, MRWMMG and Mareeba Shire Council



From an impenetrable weed-infested site dominated by Sisal (*Agave sisalana*) to a clear riparian zone revegetated with native trees

## Weedbuster Week (NRW)



Andrew Congoo from Natural Resources and Water visits students at Julatten State School to explain 'what a weed is' and key weeds to be aware of in the local area (Weedbuster Week October 2006)

## Kowanyama

- Kowanyama – MRWMMG have provided a letter of support for Recreational Fishing Grant for a Kowanyama project.



## ➤ Tropical rivers program and gully erosion



the issue



Initial data collection and ground –truthing was conducted in the second half of 2007, data is now being analysed.

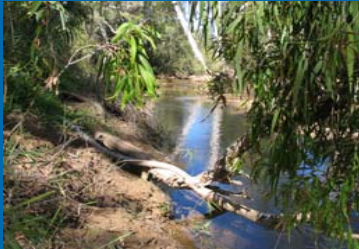
Researchers with MRWVG assistance, will be contacting landholders to provide further feedback to them and to get a better understanding of what the riparian zone means to other stakeholders .

# Buried Lava Flows in Cattle Creek Sub-Catchment of the Mitchell River, Queensland



This project set out to confirm the location and thickness of lava flows in targeted areas within the Cattle Creek Catchment. It involved ground-based magnetic susceptibility measurements and modeling, and drilling to identify the strata in locations determined from the magnetic measurements. A draft report has been prepared detailing the findings. (MRWVG Partners CCLG, JCU, NRW, UM, NHT)

## ➤ Water Quality –



ACTFR staff with the assistance of MRWVG conducted site visits and data collection during October & November.

More than 40 sediment samples collected for heavy metal analysis

Water quality data collected on waterways, waterholes and weirs throughout the upper Walsh River area, this data is currently being analysed

ACTFR provided a Report on Salinity in the Walsh River which showed that the contribution of Cattle Creek water actually reduces the salinity in the Upper Walsh River and there are other water quality factors that will need to be monitored

## ➤ Cross Regional Pest Fish Project – Tilapia “Stop the Spread” Campaign



St Anthony's School Dimbulah



Mareeba Shire Library

MRWGM working in partnership with FNQ NRM, ACTFR, DPI&F, Mareeba Shire Council

## ➤ Envirofund –rehabilitating Mt Molloy Copper Smelter



# Envirofund Round Nine

- Applications close Friday 27 April 2007
- Please request an application form at this meeting
- More information may be found at:

[www.mitchell-river.com.au](http://www.mitchell-river.com.au)

or [www.nht.gov.au/envirofund](http://www.nht.gov.au/envirofund)  
or [envirofund@daff.gov.au](mailto:envirofund@daff.gov.au)

- 1800 303 863



## Other projects and issues in our catchment

### ➤ **Community Water Grants (CWG)**

- Djungan community at Wongoo
- Cattle Creek Landholder project-they are seeking to implement water saving practices that will help protect the environmental flow of the upper Walsh, and provide a demonstration farm for community education and awareness
- Bioremediation – the applicant appeal is yet to go before Court

## Future activities

- FNQ Water Strategy
- Nullinga Dam investigation
- Seeking further funding grants now that MRWVG has Tax Deductible Gift Recipient status
- Envirofund applications
- Cross-Regional Pig Project
- Palmer River Forum
- Supporting successful Djungan and JAMARR NRW Community Awareness Grant activities

By working together we can care for country

